

Plus...  
9 warning  
signs to  
send you  
running!



# 9 Questions Nobody Asks Their ERP Partner ...But Should

Brought to you by:



# 9 Questions Nobody Asks Their ERP Partner... But Should

Your choice of implementation partner can make a world of difference. The right partner will deftly manage the project to deliver a system that fuels your business growth. The wrong partner will stumble through the implementation, disrupting your business and costing you money.

## So how do you make the right choice?

**Ask tougher questions.** Every partner is ready with prepared answers to the common questions about costs, experience and implementation methodology. But deeper questions that force partners to think will uncover far more about their business practices and commitment to client success.

A great technology partner will welcome the tough questions, eager to share what makes them unique. They will engage the services team to help provide you with complete, honest responses.

To help you identify the great partners out there, we've gone straight to the source. We've collected questions and advice from recognized top ERP (Enterprise Resource Planning) and CRM (Customer Relationship Management) implementation partners you can use during your evaluation process.

Your business management systems are the foundation for your future. Go ahead and ask the tough questions. Your future depends on it.

## Contents

1. What makes your implementation process successful?
2. How can our company contribute to project success?
3. What is your approach to change management and training?
4. How will we define and measure success?
5. How will you assign people to our project?
6. What makes your firm more qualified than the competitor?
7. How do you handle customizations?
8. How often do you go over budget on implementations?
9. How does the size of your organization influence your services?



---

## Our team says

*The key word in the phrase "ERP Implementation Partner" should be the last one. A true partner is someone who comes alongside you to help you achieve your goals.*

---

See...  
9 warning  
signs to  
send you  
running!



# 1. What makes your implementation process successful?

Even though business management systems have become more intuitive and user-friendly over the years, implementations are still tricky. Fundamentally, you need a partner who will understand your business requirements and apply the software functionality to improve processes and profits. Ideally, you want to choose a partner who can demonstrate they have successfully completed implementations many times over. Ask them to show you proof!

## Define the process

Your partner should be able to clearly describe, with documentation, the phases, deliverables and expected outcomes of their implementation process. They should address how they approach at least the following:

- Requirements gathering and analysis
- Solution design
- Development and configuration
- Deployment and training
- Post-production support

## Discuss potential challenges

Every project hits bumps in the road and your partner should be well versed in how to smooth those out. Whether it's an undiscovered requirement or an employee resisting change, experienced partners should be upfront about potential pitfalls and how they will be handled when they happen.

## Check out references

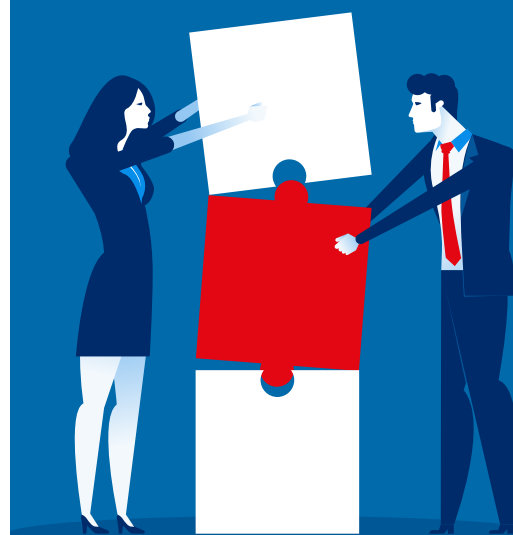
Checking references is a crucial step. The partners you speak to should be happy to supply you with names and contact information for previous customers. Call or email those references with your questions and any particular concerns you have.

---

## Our team says

*ERP solutions can essentially be whatever you need them to be. For this reason alone, choosing the right ERP implementation partner is of critical importance. When the potential of your solution is practically unlimited, the right partner can help you hone that potential into a singular vision that works for YOUR business and NOT anyone else's.*

---



## 2. How can our company contribute to project success?

An unfortunate mistake some companies make is thinking their ERP implementation partner will come in and do all the work for them. To get the most value from ERP implementation, everyone in the organization should be involved and have a clear understanding of what is going to happen, why it is happening and how they can help.

### Executive leadership

A well-planned and well-executed ERP implementation will support the long-term goals of your business. The executive team, and managers of every department, should clearly articulate how the project is going to support those goals.

Working with your partner, the executive team can set a tone of cooperation and shared responsibility. Each department should understand how the system will impact and improve their business processes and productivity.

### Our client says

*"Most people told us it would take about nine months to go live from when you start the process. It was amazing. Within five months we were live. Having the right vendor, the right partner is critically important. Dan and his team had a big part in helping set that up."*

– Sendy Stern, SVP of Technology,  
Fabuwood Cabinetry

### Our team says

*"Sendy Stern and I both rolled up our sleeves. Even on data conversions, Sendy was sitting there and working through with his people and I was with my people working together getting it done."*

– Dan Schwartz, President, NexVue

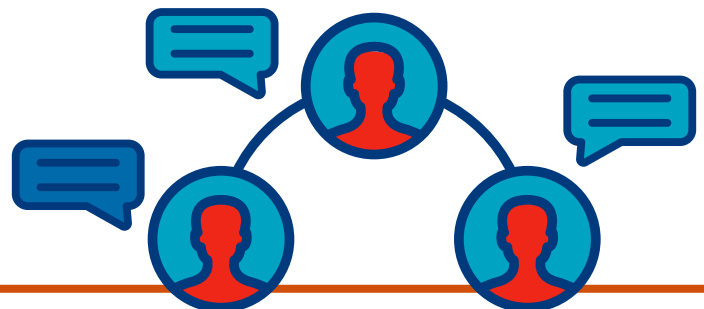
### Reduce fear factors

Change is always tricky, especially if there are people in your organization who are worried about new technology replacing them. An experienced partner will suggest a proactive communication plan to help alleviate fears and highlight positive outcomes.

### Give employees the time they need to be successful

One of the most common challenges during an ERP implementation comes when employees are asked to do their project-related work in addition to their full-time job. Stressed out, overworked, anxious people are not going to be able to give their best.

A clear strategy to ensure employees have the appropriate bandwidth to work on the project—from business process review through training—is critical to project success.



# 3. What is your approach to change management and training?

Change is hard, and if an ERP implementation is to be effective, there should be plenty of change. Your partner should be well-versed in change management with a plan from the outset to help you prepare your team.

## Prepare for resistance

People are inherently averse to change, sometimes so much so that they'll purposefully derail the project. Setting up regular lines of communication should begin before the implementation. Start talking about the change before it happens, so that everyone feels included in the process. Ask for ideas for improving current processes from the people that are doing the work.

## Take a phased approach

Discuss with your partner whether the project can be broken into smaller phases to minimize disruption and allow employees to become familiar with the new system over time. Working with your partner you can determine your priorities and tackle the most important problems first.

## Training time

A thorough training plan includes guidance before, during and after the ERP implementation. The training plan should include different learning styles to ensure no worker is left behind. On-demand training provides those self-motivated with unlimited training opportunities, but some employees will need more hand-holding.

---

### Our team says

*The right partner can help you avoid falling into the trap of assuming that there is a "one size fits all" approach to implementation. They can help harness those unique qualities in a way that improves the level of work you're able to do for your own clients AND sets you apart from a crowded marketplace.*

---



# 4. How will we define and measure success?

Before taking on an ERP implementation, your organization should clearly define the desired outcomes. From the outset, your partner should be laser-focused on how the ERP system will help you achieve those objectives.

## Measure the transformation

An ERP implementation should be transformational, enabling your company to achieve strategic objectives more efficiently and effectively. Whether it's geographic growth, new product lines or increased productivity, the desired outcomes should be well-defined and measurable.

## Clearly define success metrics

For each of the project objectives, your partner should provide the KPIs (Key Performance Indicators) that will allow you to monitor progress. KPIs should be monitored throughout your ERP implementation, but even more importantly, they should provide ongoing feedback on company progress.

### Our client says

*"What I've really learned is that set up and settings are ultimately some of the most important things to spend time on in the beginning. And also dealing with the right VAR. Dan and the team at NexVue have been extremely supportive over the ideas and customizations we have brought to them."*

*-Korpack*

### Our team says

*The technology behind an ERP solution may be complicated, but the idea at the heart of it all couldn't be more straightforward. You're talking about a piece of software that allows you to bring a system of integrated applications together, all allowing you to automate and optimize as much of your business for the sake of productivity and efficiency as possible.*

Metrics defined for each function can provide the foundation for accountability and progress. A few examples of goals and associated metrics include:

#### Improve customer experience

- Customer ratings
- Repeat customers
- Call response time

#### Increase sales performance

- Average sale
- Average margin per sale
- Percent of lost sales

#### Increase productivity

- Transactions processed per employee
- Orders completed per employee
- Number of sales calls per employee

#### Increase profits

- Average margin per product/service
- Costs per employee per location
- Receivables aging

There may be specific industry-related KPIs that you need to track. Your partner should be familiar with those and provide guidance to establish the metrics that are critical for you to monitor.



## 9 warning signs from potential partners to send you running

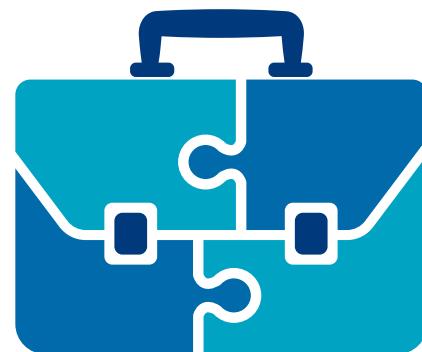
1. You've only met a salesperson (or two) but they promise they have the full support of the implementation team.
2. The partner has negative employee reviews on Glassdoor, which can signal a lack of focus on the employee experience and questionable company culture.
3. The partner has limited service capabilities. For example, they don't do customizations or provide technical support.
4. Conversations are all about out-of-the-box software functionality, and not focused on your unique business processes.
5. You have to explain basic concepts of your industry.
6. Their proposed hours are significantly less than the other estimates you have received.
7. There is no training or post-implementation support included in their proposal.
8. Their follow up and response time has been slow during the sales cycle.
9. They can't provide any references for you to contact.

---

### Our team says

*Uncovering how an ERP implementation partner has worked with previous clients can help you make an informed decision about a potential partner.*

---



## 5. How will you assign people to our project?

Project success isn't determined by the people selling the services but rather by the project delivery team. The team may include the project manager, solution architect, engagement manager and consultants. Ask your potential partner if assignments will be based on expertise related to your business requirements (not just because individuals have open time). Your partner should be happy to provide brief resumes of your project team members.

### Experts with people skills

While expertise is critical to the success of your ERP implementations, personal and team skills are equally important. Each team member should bring expertise and people skills to the project.

**Business acumen.** Consultants should demonstrate a clear understanding of basic business functions, including financial, sales and operational process flows.

### Our client says

*"For me to do what was done in a week, now takes about an hour. So, efficiency wise, it's just tremendous. A lot of work that was being done manually, now is literally painless... We've done quite a bit of customization, but I give NexVue credit, it was a seamless upgrade."*

- BMT

### Our team says

*Our team is made up of cognitive thinkers that understand the larger environment that our clients are in. We go beyond solving an immediate problem, and instead think more broadly to anticipate upcoming obstacles.*

**Industry knowledge.** At least some of the members on your project team should have expertise in your industry. They should understand industry requirements and be able to provide best practice recommendations.

**Specialized skill sets.** Depending on your project requirements, your team should include (or have access to) specialized experts. From technology to development to data analytics—ask if the experts critical to your project will be available when needed.

**Training and change expertise.** The goal of the project team should be to prepare your employees to be comfortable and self-sufficient on the new system. The team should be well-versed in organizational change management to help in user adoption and acceptance of the project.

**Project accountability.** Your project manager should clearly define how challenges that arise during the implementation will be handled.

**Ongoing support.** At the end of the implementation, there should be a formal handoff to the next stage of your support. You should understand who your point of contact will be and what kind of response time to expect.



# 6. What makes your firm more qualified than the competitor?

As you evaluate ERP solutions, you're likely to talk to a number of potential partners. Finding the right partner to work with can be as important as finding the right solution to meet your organization's unique requirements. Your partner should be ready to tell you why they believe they can bring the most value to your organization.

## Industry expertise

Most of the partners you talk to will likely have an in-depth understanding of the software, but their knowledge of your industry is equally important. A partner with expertise in your industry has gained insight into best practices that other organizations use. They have learned lessons in applying the software to specific challenges and requirements of the industry that will save you time and improve the impact the solution has on productivity and profits.

## Certifications

Certifications can provide insight into more than just competence in the software. The level of vendor certification (gold, silver) can indicate how closely the partner is aligned with the software vendor. Higher-level partners often have faster access to support from the vendor's technical experts.

Technical, industry and functional certifications held by the people who will work on your project indicate expertise and a commitment to learning. With the pace of change in technology today, your partner and their employees should be committed to continuous training and professional development.

## A trusted advisor

While an implementation is short term, establishing a long-term relationship with your partner will deliver big dividends. Ask your partner, and talk to their references about the long-term relationships they have with clients. As a trusted advisor, your partner can help you take full advantage of your technology now and into the future.

---

### Our team says

*NexVue is unique in that we are constantly looking at, not just what is coming next for Acumatica, but where WE can take the solution next through customization and development to equip our clients for success now and in the future.*

---



## 7. How do you handle customizations?

Standard ERP functionality is designed to support the most common business processes. But most organizations have unique processes and requirements that aren't "standard." There are often ISV (Independent Software Vendor) solutions to fill in gaps or provide industry-specific functionality, but sometimes custom code development is required. Your partner should be ready to talk about the potential for customizations and how you will work together to find the best solution.

### Industry expertise

As mentioned in previous sections, the industry expertise of your partner can make a huge difference in the success of your implementation project. If your partner has deep experience in your industry, they will be familiar with the strengths and weaknesses of the ERP system for your business. They will be familiar with the ISV solutions that can bridge gaps and they will understand what customizations may be necessary.

---

### Our team says

*Vision is critical for modern ERP Partners. We are no longer just helping you with transaction processing. Your ERP Partner needs vision to help optimize every corner of your business.*

---

---

### Our team says

*Too much customization or too many integrations can be problematic when it comes time to upgrade. As ERP solutions evolve, often times the customizations that were built by outside developers in previous versions become part of the standard solution in new releases.*

---

### Determine the best course of action

During the requirements analysis phase of your implementation, your project team will uncover any customizations that will be suggested or required. Your partner should have a plan for how you will evaluate options and choose the best course of action. Essential questions to ask include:

- Is there an ISV solution that will solve this issue rather than a customization?
- Would it be better to change our traditional business process for this situation rather than create a customization?
- Could we use automated workflows instead of customization to solve this issue?
- Will the customization cause us any issue during upgrades or new version releases?
- Can we custom create necessary reports that are not included in the system?
- How much experience do your developers have in creating this type of customization?

## 8. How often do you go over budget on implementations?

There are many reasons that a project can go over budget. Sometimes the culprit is scope creep when the project expands to address more than was originally proposed. There are projects where unknown issues come up, like an unexpected business process or integration requirement that can only be solved by a customization. Or the proposal underestimates the training and change management users need. Your partner should be able to tell you how often their projects go over budget and what processes they have in place when it does happen.

### Established process and clear project plan

Your partner should have a well-documented implementation process that clearly lays out how the project will be managed. Often, your partner will not be able to provide a final project budget number until the requirements analysis phase is complete. When your budget is set, a timetable and project plan should provide guidance on what will be required of your team to complete the project on time.

### Active project management

Keeping everyone on track, including your team, is the primary job of the partner project manager. The partner project manager should be working proactively to ensure you understand what resources will be needed to complete every phase of the project on time. They should be communicating regularly and actively with your project team, providing regular updates on project progress and any potential challenges to on-time, on-budget completion.

### Change orders

There may be situations during your project that requires a change order, which is a documented, well-defined addition to the original plan. Your partner should be ready to explain how that process will work if the need arises.

### Our team says

*The total cost of ownership involves many factors, such as the amount of data you're migrating from another ERP, the customizations required for the ERP to support your business needs, and the resources needed to get new users up to speed. A good partner will manage those costs.*



# 9. How does the size of your organization influence your services?

The size of your implementation partner's organization may have a significant impact on how your project is managed. A larger firm may have a wider breadth of consulting resources to draw from. A smaller, local or industry-focused professional team may provide more "personalized" service. There are several questions you can ask to find a partner that can deliver on your expectations.

## A deep bench

A larger organization is likely to promote the deep bench of consultants they can bring to your project. This can be especially helpful if your project is on a fast track or is an "out-of-the-box" implementation. On the other hand, a smaller team may have more of the industry specialists that your project requires.

## Our team says

*The Acumatica framework has been a game changer in terms of the value middle market companies can realize from a modern ERP. The vision and innovation of the design and development team is now exponentially more critical to the business value of the development effort.*

## Our team says

*The right ERP implementation partner brings not just industry experience to the table, but cross-industry experience too. They need to understand your organization in intimate detail, but also need to have insight into the various functions within that business, like human resources or accounts payable, in a way that lets you leverage the ERP solution into creating a genuine competitive advantage.*

## Experience counts

Find out if the project team has previously worked together. Teams that are assembled from remote locations may not know each other's methods and may require some ramp-up time. Teams who have worked as one on multiple projects know who is doing what and when.

## Commitment to training

The size of the partner does not automatically reflect their commitment to ongoing training—which is critical to the skill sets of your project team. Ask prospective partners about the training and professional development programs they have in place for employees.

## Company culture

Regardless of the size of the partner, their company culture will have an impact on your project. A great way to get insight into a company's culture is to look at their [Glassdoor](#) ratings. Current and past employees will give you an inside look as to how the company treats their employees. You want to work with a partner who values and empowers their employees.

## Choose a partner ready to answer the tough questions

Finding the best partner to help you make the right choices before starting your ERP implementation will save you time, headaches and money. By asking the tough questions, you can uncover the strengths and weaknesses of the potential partners you evaluate.

### Next Steps

At NexVue we understand and deeply believe that every business is a bit different from the next. The right ERP solution and the right implementation partner, can lean directly into those qualities that make you special.

The NexVue team is:

- small enough to bring a connected, cohesive, personalized approach to projects
- passionate enough to personally invest their utmost expertise in coding, design, infrastructure, and business process improvement
- dedicated enough to derive a unique level of joy from exceeding our clients' expectations

This balance breeds an unparalleled level of trust between NexVue and our clients.

NexVue is both a leading Acumatica Gold Partner and Acumatica ISV.

- Discover NexVue's Acumatica-based solutions for [Food Service Distribution](#), [Equipment Rental](#) and [Your Business](#).
- [Request an Acumatica Demo](#)
- Contact NexVue at 203-327-0800 or [info@nexvue.net](mailto:info@nexvue.net)

### Our partner says

*"NexVue is one of our founding partners. We've seen first-hand how NexVue's knowledge and innovative use of the Acumatica framework, combined with their business vision, enables their clients to maximize the enterprise value of their ERP solution."*

*-Jon Roskill, CEO, Acumatica*



# About NexVue Information Systems

The name NexVue comes from the words “Nexus” which means a point of coming together and “Vue”, the French word for vision. NexVue brings together a modern vision for leading technology with core values of quality service and trusted partnership.

For 30 years, NexVue Information Systems has been developing and innovating on ERP solutions. With over 500 ERP implementations and 2500 businesses using NexVue developed solutions, NexVue solutions go beyond ERP implementations and address today’s business and technology issues such as improved business agility, on-demand scalability, security and control, maximal value of informational assets, and the lowest total cost of ownership.

Since Acumatica’s inception, NexVue has been fully focused on it as the platform of choice to move their and their clients’ businesses forward. With 100% focus on Acumatica development, NexVue leverages a vast and deep knowledge of the Acumatica framework, as well as unique industry needs to develop solutions that cover a broad range of needs while also suiting the niche requirements of specialized markets.

When you’re ready to discuss partnering with a dedicated and innovative team that has a vision for creating solutions that will help you and your business achieve more, let us know!

## Contact NexVue Information Systems:

Dan Schwartz

65 Broad Street Stamford, CT 06901

203-327-0800

[www.nexvue.com](http://www.nexvue.com)

[info@nexvue.net](mailto:info@nexvue.net)

[Blog](#) • [Twitter](#) • [Facebook](#) • [YouTube](#) • [LinkedIn](#)

